

24
HOURS
7 DAYS A WEEK



600KW Packaged Boiler Plant

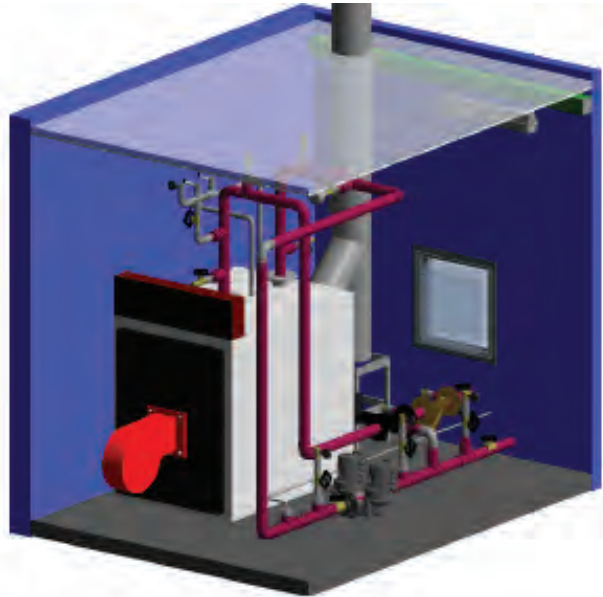
Specification Sheet



600KW

Packaged Boiler Plant

Specification Sheet



Maximum Output:	600kW Gas or Oil
Boiler:	Viessman
Burner:	Oil: Riello RL50 Gas: RS50
Pumps:	tpd 60-240/2 (twin bed) fixed speed
Temperature Range:	60-90°C
LTHW Connections:	DN100
Electrical:	32 amp 3 phase
Gas Connection:	50mm
Water Connection:	15mm
Flow Rate:	11.90kg/s and 70kPA
Dimensions (LxWxH):	3030 x 2428 x 2599mm
Weight:	3.5 tonnes (approx.)
Pressurisation Plant:	Included
Telemetry:	Trend IQ3 controller with GSM modem reporting
Variable Temperature:	Yes
Noise:	72 dBA
Handling Options:	HIAB
HWS Connection:	DN40
HWS Flow Rate:	1 Kg/s
Max HWS Temperature:	60°C
Maximum Static:	3Bar – max system volume 1500 litres (200 litre expansion vessel included)
CWS Connection:	DN40

Bespoke options are available - call us today!